

Miami Modification v2



A Miami modification for Emergency 4 game featuring:

- ✓ About 100 new playable units.
- ✓ New custom freeplay map.
- ✓ Complete optimization.
- ✓ Highest amount of aircraft compared to other mods.
- ✓ Complete UI.
- ✓ New scripts and sirens.
- ✓ Top of the line bluelights.

Index:

1. Installation	3
1.1 Customization options	3
1.2 Getting started	3
2. Development team	4
2.1 Special thanks	4
3. Terms of usage	5
4. Credits	6
4.1 Vehicles	6
<i>Fire Department</i>	6
<i>Ambulance</i>	10
<i>Law Enforcement</i>	13
<i>Tech</i>	18
<i>Missionspec</i>	20
<i>Civil Cars</i>	21
4.2 Houses	23
4.3 Objects	24
4.4 Persons	24
4.5 Scripts	26
4.6 Sounds	26
5. Report a bug	27
6. Report a copyright problem	28
7. Gameplay tips	28

1. Installation

The modification came as already installed package, so after downloading it you need to click on the archive and unpack it with a archive program of your choice, next you want to move the **Miami-Dade Modification v2** folder to your mods folder @ your path\sixteen tons entertainment\Emergency 4 Deluxe\Mods\ .

On the next step you need to install a coronas pack that came with the package.

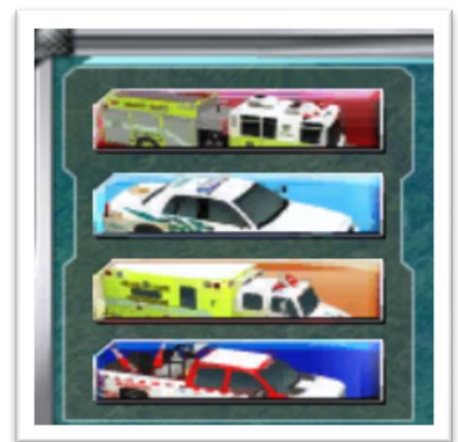
To do this, you need to open @ your path\sixteen tons entertainment\Emergency 4 Deluxe\Data\Textures\Coronas\ – and copy and paste a **Coronas** folder for a backup, after which move and replace one that came with the mod.

1.1 Customization options

You can have a Miami themed Units group icons, but they came with a cost of replacing them at a base of the game, so if you try loading any other mod, you will still get them.

The steps are similar as with the coronas, first do a backup at @ your path\sixteen tons entertainment\Emergency 4 Deluxe\Data\UI\Game\Navigator\ and then copy and paste our **Navigator** folder.

Also you can have a crane with a bumper just like in Terminator movie – for this go to the model folder and swap the names on it.



1.2 Getting started

Our map texture was never finished, so to compensate for that we used a detailed polygons. For you to see them - you need to turn a Graphics>Details option for at least medium.



After following all the steps, you are good to go.

Side notes:

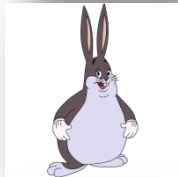
- The loading of a mod can take a while, from 5 to 10 minutes and in the meantime your computer would freeze. So while it loads you can go make some tea or poop, and be fine in the end.
- Some X Y Z assets are not added to the mod because we missed them - they was not intended to be here in the first place, so please keep that in mind before poking us.
- Before attending any edit or grabbing stuff from here, please read the Terms of Usage, so we can avoid witch-hunting and punishing hammers flying around, after you post something, you know.

2. Development team



The latest version of the modification is brought to you by:

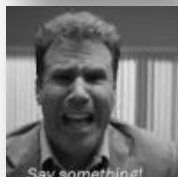
EmC-Unit – leader of the mod handling 3d models, finishing the map and in reality doing everything else.



Itchboy – top dog that helped us a lot with the scripts, advice, models, models packs and much much more.



Dyson – person that reanimated an alpha version of the mod and started making a new map, without whom, the mod would be long dead.



Finn Rescue 12 – one of the best lighters on the site!

2.1 Special thanks

- Infinity & Beyond Photography - Kev Cook <https://www.flickr.com/photos/infinity-and-beyond/>
- JOSEARGUINARENA <https://www.youtube.com/channel/UCViLhJluOcfohVOxaVBkmBQ>
- Alex M. Poitevien Jr. <https://firepix21.smugmug.com/>
- 3DskPhotoReference <https://www.3d.sk/>
- Mark Bindman <https://www.firebuff.org/>
- Usfirepolice http://www.usfirepolice.net/fl_florida/fl_miami_dade_county_1/
- [rescue911.de] - worldwide emergency responses <https://www.youtube.com/channel/UCBTuLGxfebgHETn-EZwh5yA>

- RTobi (Rummeltobi) <https://www.youtube.com/channel/UCCB0p8S1xYf-J0zsZbm3r3Q>
- BOSFranconia https://www.youtube.com/channel/UCUmJcE_YLbJCNDQE7U8mDLA
- Pottyscottty – civil persons skins;
- BorjaXmusic – retired team member;
- Rihis – retired team member;
- Viacheslav Pyrih aka pyreegue - Boeing 737-800 UIA skin;
- nfspdf – english translation from LA mod;
- Fire Dept. Boston – testing.

3. Terms of usage

Terms of usage for players are simple, you can store a copy of the mod on your computer but re-uploading or re-distribution of this modification file is strictly prohibited.

Terms of usage for modelers are:

- Usage of the assets is allowed only for EMERGENCY game series;
- Strictly nonprofit and no income use;
- You must give a **proper** and full credits under (or on) the images of your posts either on the forums or discord groups and in the readme file.

Here's examples on how to and not give a proper credits:

- If you are using any lights from our mod, you must add **Finn Rescue 12** to the credits.
- Usage in sub mods, mods, private mods that contain Miami in them are prohibited.
- Creating and posting sub mods edits (addons) for the mod is not allowed. For example adding more fire stations or making new units for the mod.

4. Credits

4.1 Vehicles: Fire Department

MDFR Chevy Impala 2011



Credits: Itchboy, EmC-Unit.

MDFR Ford F350 BC1



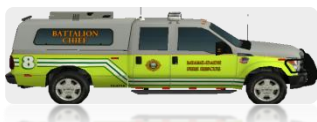
Credits: Itchboy, EmC-Unit.

MDFR Ford F350 BC2



Credits: Itchboy, EmC-Unit.

MDFR Ford F350 BC8



Credits: Itchboy, EmC-Unit.

MDFR Ford F350 Utility



Credits: Itchboy, EmC-Unit, RK-1000.

MDFR Ford F700 AT



Credits: EmC-Unit, Rihis, Itchboy, Robert66.

MDFR Kenworth T800 SSU



Credits: Itchboy, EmC-Unit, Rihis, Cops.

MDFR Pierce Lance 2003 TRT1



Credits: EmC-Unit, Rihis, Cops, Hoppah.

MDFR Kenworth T800 MC1



Credits: Itchboy, EmC-Unit, Bama1234.

MDFR Pierce Quantum 2003 E17



Credits: EmC-Unit, Rihis, Bama1234, Dyson.

MDFR Pierce Quantum 2003 E30



Credits: EmC-Unit, Rihis, Bama1234, Dyson.

MDFR Pierce Lance 2003 E35



Credits: EmC-Unit, Rihis, Bama1234, Dyson.

MDFR Pierce Velocity PUC E7



Credits: Bama1234, EmC-Unit, Rihis.

MDFR Pierce Quantum 2006 E47



Credits: EmC-Unit, Rihis, Bama1234, Dyson.

MDFR Rosenbauer Commander E 56



Credits: EmC-Unit, Rihis.

MDFR Rosenbauer Commander E Co 3



Credits: EmC-Unit, Rihis.

MDFR Pierce Dash T52



Credits: EmC-Unit, Rihis.

MDFR Pierce Velocity L22



Credits: Bama1234, EmC-Unit, Dyson, RK-1000.

MDFR LaFrance Eagle A39



Credits: Emergency Brasil Team, EmC-Unit, Dyson.

MDFR Pierce Lance 2003 HAZMAT69



Credits: EmC-Unit, Rihis, Cops, Hoppah.

MDFR Freightliner 2003 MSB



Credits: EmC-Unit, Rihis, Voodoo_Operator, Hoppah.

MDFR Motorboat



Credits: Hoppah, EmC-Unit.

MIA Ford F550 QRV59



Credits: Itchboy, EmC-Unit.

MIA Oshkosh P-19 ARFF 3



Credits: mr matt5432123, EmC-Unit, Hoppah, Itchboy.

MIA Oshkosh Striker 3000 ARFF 4



Credits: mr matt5432123, EmC-Unit, Hoppah, Itchboy.

MDFR MetalCraft FireStorm 50 FB73



Credits: EmC-Unit, Bama1234.

10T DC-10-30 Air Carrier N911



Credits: EmC-Unit.

Ambulance

MDFR Ford Expedition EMS Bat 1



Credits: Itchboy, EmC-Unit.

MDFR International 2006 R12



Credits: Rihis, EmC-Unit.

MDFR Sterling Acterra R23



Credits: Rihis, EmC-Unit.

MDFR International 2007 R7



Credits: Rihis, EmC-Unit.

MDFR Freightliner 2003 R58



Credits: Voodoo_Operator, Rihis, EmC-Unit.

MDFR Spartan 2010 R33



Credits: Wooder, EmC-Unit, Rihis.

MDFR Ford F350 R1



Credits: Bama1234, Itchboy, EmC-Unit.

MDFR Ford F350 R9



Credits: Bama1234, Itchboy, EmC-Unit.

MDFR International 2017 R30



Credits: Itchboy, EmC-Unit, Bama1234.

MDFR Freightliner M2 2014 R72



Credits: Itchboy, EmC-Unit, Bama1234.

MDFR International 2017 R2



Credits: Itchboy, Bama1234, EmC-Unit.

MDAS Ford Econoline Ambulance



Credits: Itchboy, EmC-Unit, Rihis.

MDAS Ford Econoline Box Ambulance



Credits: Itchboy, EmC-Unit.

MDAS GMC Topkick ALS Ambulance



Credits: Bama1234, EmC-Unit.

MDFR Chevy Tahoe 2013 K9



Credits: Itchboy, EmC-Unit.

MBFR Ford Expedition Lifeguard



Credits: Itchboy, EmC-Unit.

MBFR Ford F150 Lifeguard



Credits: Itchboy, EmC-Unit.

MDFR GMC RTS MERV



Credits: BorjaXmusic, EmC-Unit.

CSI GMC Savana 2003 Medical Examiner



Credits: Itchboy, EmC-Unit.

EC-135 Mercy Air



Credits: Wittener, Iglheaz, EmC-Unit.

EC-135 MedStar



Credits: Wittener, Iglheaz, EmC-Unit.

MDFR Bell 412 Air Rescue 4



Credits: Iglheaz, EmC-Unit.

Law Enforcement

MDPD Harley Davidson Road King



Credits: MikeyPI, Hoppah, EmC-Unit.

MDPD Ford CV



Credits: NNICO, EmC-Unit, Rihis, Bama1234.

MDPD Ford CV Led



Credits: NNICO, EmC-Unit, RK-1000, Bama1234.

MDPD Ford CV Miami Lakes



Credits: NNICO, EmC-Unit, Rihis, Bama1234.

MDPD Ford CV New Type



Credits: NNICO, EmC-Unit, RK-1000, Bama1234.

MDPD Dodge Charger 2010



Credits: MikeyPi, EmC-Unit, RK-1000, Bama1234.

MDPD Dodge Charger SXT 2012



Credits: Itchboy, EmC-Unit, RK-1000, Bama1234.

MDPD Dodge Charger SXT 2012 PB



Credits: MikeyPi, EmC-Unit, RK-1000, Bama1234.

MDPD Ford Taurus 2013



Credits: Itchboy, EmC-Unit, Bama1234, RK-1000.

MDPD Chevy Impala 2011



Credits: Itchboy, EmC-Unit, Bama1234.

MDPD Ford Fusion 2016



Credits: EmC-Unit, modder_spain1.

MDPD Ford CV Detective



Credits: Nnico, EmC-Unit.

MDPD Ford Expedition SUV



Credits: Itchboy, EmC-Unit.

MDPD Ford Explorer SUV



Credits: Itchboy, EmC-Unit.

MDPD Dodge Charger SXT 2012 Unmarked



Credits: Itchboy, EmC-Unit.

MDPD Ford F150 Pickup



Credits: Itchboy, EmC-Unit.

MDPD Ford F550 Bomb Squad



Credits: Itchboy, EmC-Unit, RK-1000.

MDPD Ford Expedition SUV



Credits: Itchboy, EmC-Unit.

MDPD Ford Explorer 2020 New Type



Credits: Itchboy, EmC-Unit, Bama1234.

MDPD Hummer H2 CSI



Credits: Hoppah, EmC-Unit.

MDPD Lenco Medcat SRT



Credits: EmC-Unit, Itchboy, RK-1000.

MDPD Lenco Bearcat SRT



Credits: Hoppah/MikeyPI, EmC-Unit, Dyson, Cops.

MDPD Sterling Acterra SRT



Credits: EmC-Unit, Rihis.

MBPD Chevy Impala 2011



Credits: Itchboy, EmC-Unit, Bama1234, RK-1000.

MBPD Ford Taurus 2013



Credits: Itchboy, EmC-Unit, Bama1234, RK-1000.

MBPD Ford Explorer SUV



Credits: Itchboy, EmC-Unit, Bama1234, RK-1000.

FHP Dodge Charger SXT 2012



Credits: Itchboy, EmC-Unit, Bama1234.

FHP Dodge Charger RT 2015



Credits: Itchboy, EmC-Unit, Bama1234.

FHP Chevy Suburban 2011



Credits: Itchboy, EmC-Unit, Bama1234.

FHP Chevy Tahoe 2015



Credits: Itchboy, EmC-Unit, Bama1234.

MBPD Ford E350 Marine Patrol



Credits: Itchboy, EmC-Unit, RK-1000.

MBPD Ford E350 Prisoner Transport



Credits: Itchboy, EmC-Unit.

MDPD EC AS350 Aviation Unit



Credits: MikeyPi, EmC-Unit.

MDPD Dodge Charger RT 2015



Credits: Itchboy, EmC-Unit.

Tech

FDOT Dodge Ram 3500 SP



Credits: Itchboy, EmC-Unit.

FDOT Ford F350 RR



Credits: Itchboy, EmC-Unit.

FDOT Chevy Silverado 2500HD RR



Credits: Itchboy, EmC-Unit.

CED Chevy Express 2003 ES



Credits: Itchboy, EmC-Unit, MadMonk, Nikolas.

FDOT Ford F650 Tow SP



Credits: EmC-Unit, Itchboy.

FDOT Freightliner M2 2014 Tow



Credits: EmC-Unit, Itchboy.

Demag AC395 Crane



Credits: EmC-Unit, Itchboy.

USCG Bell 407



Credits: EmC-Unit.

USCG MH-65 Dolphin



Credits: BorjaXmusic, EmC-Unit.

USCG Agusta MH-68A Stingray



Credits: BorjaXmusic, EmC-Unit.

USCG AS Super Puma 225



Credits: EmC-Unit, Hoppah.

Air Mobility Command Lockheed Martin C5 Galaxy



Credits: EmC-Unit.

US Army Flatbed Transport Truck



Credits: EmC-Unit, Itchboy.

US Army Front Wheel Loader



Credits: EmC-Unit.

US Army Improved Ribbon Bridge



Credits: MikeyPi, Hoppah, EmC-Unit.

Missionspec

UANG Antonov AN 178 09 Blue



Credits: EmC-Unit.

UANG AS Super Puma 225 10 Yellow



Credits: EmC-Unit, Hoppah.

UANG Bogdan 2251 Sanevac



Credits: EmC-Unit.

UANG KRAZ Spartan APC



Credits: EmC-Unit.

VAZ Lada 2115



Credits: Rihis, EmC-Unit.

Skoda 9 Trolleybus



Credits: EmC-Unit.

Civil cars

Bluebird School bus



Credits: EmC-Unit, Itchboy.

IC CE Series School Bus



Credits: Itchboy, EmC-Unit.

Rihis Civil Cars



Credits: Rihis.

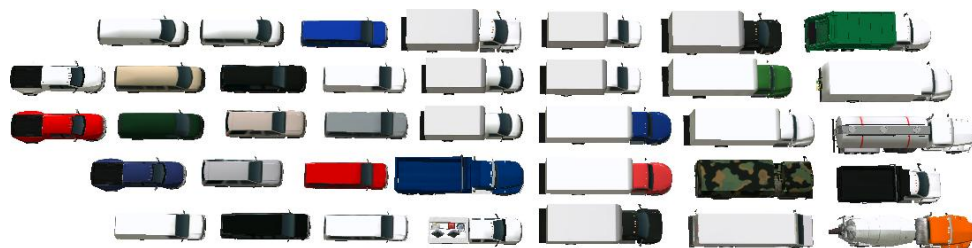
Itchboy Civil Cars Pack



Credits:

EA GAMES: Cadillac CTS Ford Taurus Chevrolet Cobalt Nissan Versa Dodge Caliber Dodge Caravan Ford Explorer Dodge Magnum Dodge Ram 1500	UBISOFT: Lincoln Town Car Chevrolet Impala Ford Crown Victoria Mercury Grand Marquis Cadillac Escalade Ford F150 Ford F350 Ford F550 Dodge Ram 3500 Dodge Ram 5500 Chevrolet Volt	TURN10 STUDIOS: Honda Civic Kia Forte Toyota Camry Toyota RAV4 Nissan Leaf	SIXTEEN TONS: Honda S2000 Acura NSX DEEP SILVER: Lexus S460 Toyota Prius	ITCHBOY: Dodge Durango Subaru Legacy Range Rover Chevrolet Suburban Chevrolet Tahoe Ford Expedition
---	---	--	---	---

Itchboy Truck Addon



Credits:

Bama1234: M1078 LMTV	ROCKSTAR GAMES: Garbage Truck Parts	16T ENTERTAINMENT: Cement Truck Parts	ITCHBOY: International Durastar Freightliner M2 Kenworth T800 Utilimaster Aeromaster
EA GAMES: Chevrolet C4500 GMC Topkick Dump Truck Parts	UBISOFT: Ford F350 Tank Truck Parts	ITCHBOY: Delivery Truck Parts Beverage Truck Parts Utility Truck Parts	

4.2 Houses

Firehouse and hospital from LA mod



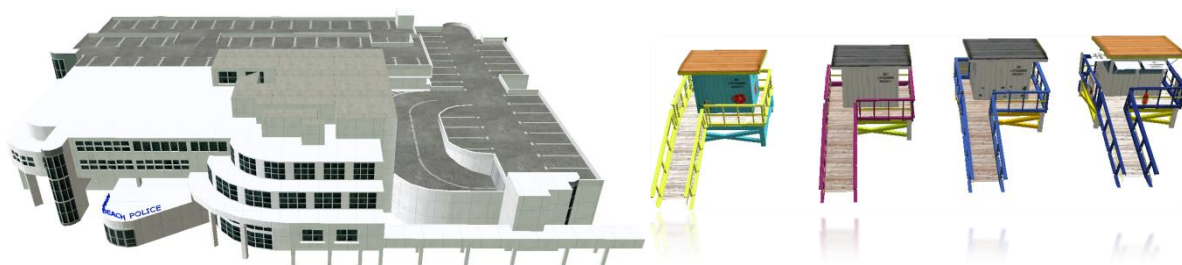
Credits: Hoppah.

Houses from LA mod



Credits: Hoppah, Voodoo_Operator.

Police station and Lifeguard tower



Credits: EmC-Unit, Dyson.


Civil houses




Credits: EmC-Unit.

4.3 Objects

Equipment	
	
Credits: Hoppah.	Credits: EmC-Unit.
	
Credits: EmC-Unit, Dyson.	Credits: Itchboy.

Other	
	
Credits: Firequi.	Credits: Janku.

4.4 Persons

Police	
	
Credits: EmC-Unit.	

Police



Credits: gabri1799, EmC-Unit.



Credits: Dyson, EmC-Unit.



Credits: EmC-Unit.

Ambulance



Credits: EmC-Unit, Dyson.

Fire Dept



Credits: Dyson, EmC-Unit.



Credits: EmC-Unit.



Credits: EmC-Unit.

4.5 Scripts

Code3RLS, FedSigQSiren, FedSigRumblerSiren, FedSigSmartSiren, PowercallDx5200, Strela, Tomar940, WhelenEpsilon - Credits: RAFAELMFERNANDEZ, Dyson.

AimedShot, arrest, askperson, attachfirehose, ChangeClothes, CheckVictim, cool, deinstall, DrawWeapon, emptycar, EnterBasket, entercar, extinguish, GetAxe, GetChainsaw, GetExtinguisher, GetFirehose, GetFlashgrenade, GetJump pad, GetRoadBlock, GetShears, gohome, HolsterWeapon, install, LABattalionChief, LABombRobot, LACallPatrolCar, LACHase, LADirectionalLights, LADropDiver, LAEquipmentCommands, LAFireStation, LAFireStationStart, LAFlashingLights, LAFloodLights, LAGetEMTBag, LAHazmatTent, LAHeal, LAM4a1, LAMotorboat, LAMotorcycle, LAMP5, LAPatrol, LAPSG1, LAsstretcher, LAToFireStation, LAToHospital, LATrafficCone, lift, M4a1, MIAMIAutomaticSirens, MiamiMobileCommand1, MIAMIPoliceStation, MIAMIPoliceStationStart, MIAMIToPoliceStation, move, pickup, putincar, RapidDeployment, RapidInsertion, removefirehose, SendPeople, ShipAnchor, ShipDropWater, ShipUpWater, Throw, Use, WaterOff, WaterOn, WaterSupplyFreeplay - Credits: Hoppah, Itchboy, (minor edits – EmC-Unit).

LAArrest - Credits: Woltep, Hoppah.

LADead - Credits: Hoppah, Fry.

EnterHouse - Credits: Fry.

LAStabilize, MIAMISiren - Credits: Bass-ti, Hoppah.

MIAMICustomEvents, MIAMIStretcher - Credits: Itchboy.

MIAMITaser - Credits: eggcarton.

Peberspray - Credits: BMA.

4.6 Sounds

/Equipment folder:

DrawTaser, DrawWeapon, HandcuffsLock, HandcuffsUnlock, HolsterTaser, HolsterWeapon, Shot01, Shot02, Stungrenade01 - Credits: EmC-Unit.

Pepperspray - Credits: BMA.

Taser - Credits: eggcarton.

/Misc folder:

72_ecg_heartbeat, 73_ecg_flatline, fire_gate, reanimation01, Running - Credits: EmC-Unit.

fire_alarm - Credits: Silvergate Media.

gas_mask - Credits: Lucasfilm.

engine_motorcycle, m4_get, m4_shoot, mp5_get, mp5_shoot, psg_shoot, radio_beep, SCBA, unlock_weapon, - Credits: Hoppah.

/Sirens folder:

Code 3 RLS folder, FS Q Siren folder, FS Rumbler folder, FS Smart Siren folder, Powercall Dx5200 folder, Tomar 940 folder, Whelen Epsilon folder - Credits: l3ubba22.
Strela folder - Credits: EmC-Unit.

/Vehicles folder:

Airplane01, CarDoorClose - Credits: EmC-Unit.

Rotor01, Rotor02, Rotor03 - Credits: Blauleuchte.

/Voices folder:

horatio folder - Credits: CBS.

swat folder - Credits: current tv.

PoliceWarningF, PoliceWarningF2, PoliceWarningF3, PoliceWarningF4, PoliceWarningF5, PoliceWarningM, PoliceWarningM2, PoliceWarningM3, PoliceWarningM4, PoliceWarningM5 - Credits: Activision.

5. Report a bug

You can submit a bug report on our topic on [Emergency-Planet](#). Please notice because we have never used a Steam we are not going to assist people with problems on EM4 from Steam.

Standart form would be:

1. What happened?
2. Your game version?
3. Images or videos?
4. If it CTD – your logfile.txt

Know bugs:

- Fire trucks cant enter firestation from the back, so instead they go around and park from the front gate;
- At missions with pontoon bridge some units can't pass the bridge (for example TRT1 or Crane);

- Water cannon on ladders drop below the ladder;
- Ladders rapid deployment don't act properly;
- Helicopter have wrong take off and landing sounds.

6. Report a copyright problem

If you find yourself not included in the authors list - please send a private message for [EmC-Unit on Emergency-Planet](#), so I can fix that!

7. Gameplay tips

- You can access a small dispatch menu by clicking group 1 or battalion chief radio command:



- If you hold Ctrl while attempting to draw a gun by a police officer – you will be able to draw a taser instead:



- If you get a traffic jam, you can use a traffic debug function at any station control panel;
- You can access parking script by pressing Delete key;
- Our modification do not have a tanker (the tanker in game is a water canon);

Thank you for downloading our mod! Good luck and have fun!

Miami mod team 21.02.2021